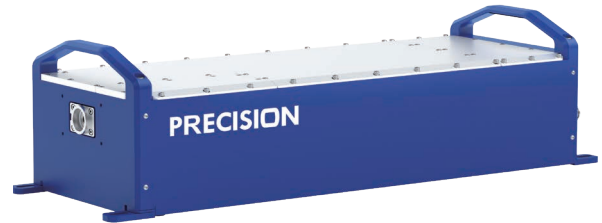


# AONano Precision Series

## Industrial Green nanosecond laser

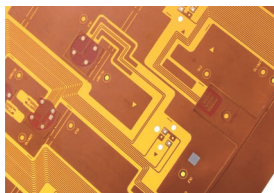
- < Wide operating frequency range 50-300kHz
- < Output power of 90W+
- < End mirror adjustment
- < IP65 protection rating



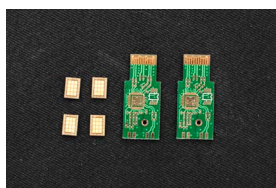
### ► Features & Benefits:

This is the high-power version of our AONano Compact-532 laser series. The all-in-one design makes the laser more compact and reduces the total weight. It saves space for installation on the customer side, lowers the integration cost and simplifies the installation process. The water-cooled design allows the laser to work reliably in various harsh and extreme environments and makes the laser to be the ideal candidate for the 7x24 non-stop production needs.

The IP protection level is upgraded to IP65, the waterproof and dustproof level of the laser is upgraded, which can easily cope with the extreme environment and solve the problem of condensation brought by high temperature and high humidity environment. Advanced features, including crystal indexing, cleaning air system, and automatic power optimization function enable the long-term stability and reliability of the laser.



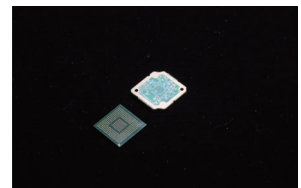
FPC Cutting



PCB Cutting



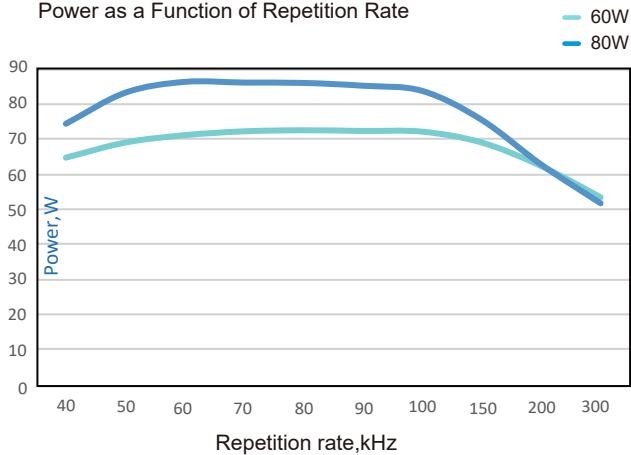
Precision Metal Cutting



IC carrier board cutting

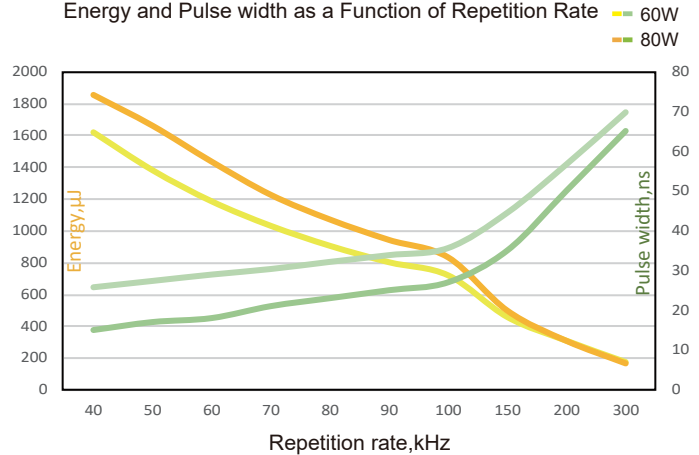
Typical Performance AONano Precision-60W/80W

Power as a Function of Repetition Rate



Typical Performance AONano Precision 532-60W/80W

Energy and Pulse width as a Function of Repetition Rate



### AONano Precision 532

Specification	60W-50K	80W-60K
Wavelength (nm)	532	
Average Power (Watts)	> 60W@50KHz	> 80W@60KHz
Energy (mJ)	> 1.2	> 1.4
Specified Repetition Rate(kHz)	50	60
Repetition Rate (kHz)	50-300	
Pulse Width (fs)	< 30	< 20
Beam Quality (M <sup>2</sup> )	< 1.2	
Beam Roundness (%)	> 90	
Beam Diameter (mm)	~1.4	
Beam Divergence (mRad)	< 2.3	
Point Stability (μrad/°C)	< 20	
Polarization Ratio	100:1 Linear,Vertical	
Pulse-to-Pulse Stability (% RMS)	< 2	
Average Power Stability(% over12 hours)	< 3	
Cold Start Warm-Up (mins.)	< 40	
Standby Warm-Up (mins.)	< 10	
Operational Temperature Range (°C)	5-40°C	
Operation Humidity Range (%)	20 to 80,Non-condensing	
Storage Temperature Range (°C)	- 20 to 50	
Storage Humidity Range (%)	20 to 80,Non-condensing	
Input Voltage (VDC)	24/1000	
Rated Power(W)	< 600	
Communication	RS232	
Cooling	Water	
Weight (kg)	16	

# AONano Precision SERIES

AONano Precision -532 Laser CAD Drawing

